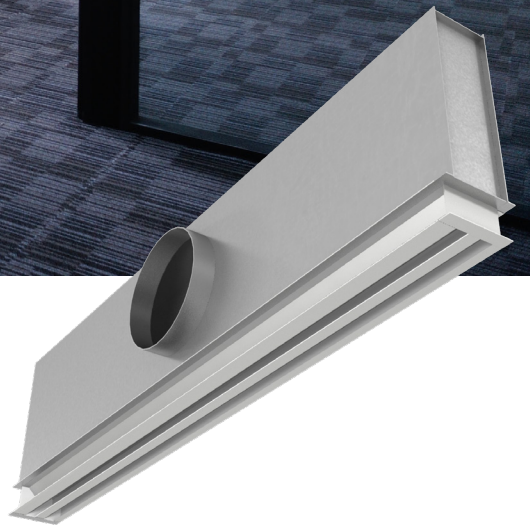


# TBD7

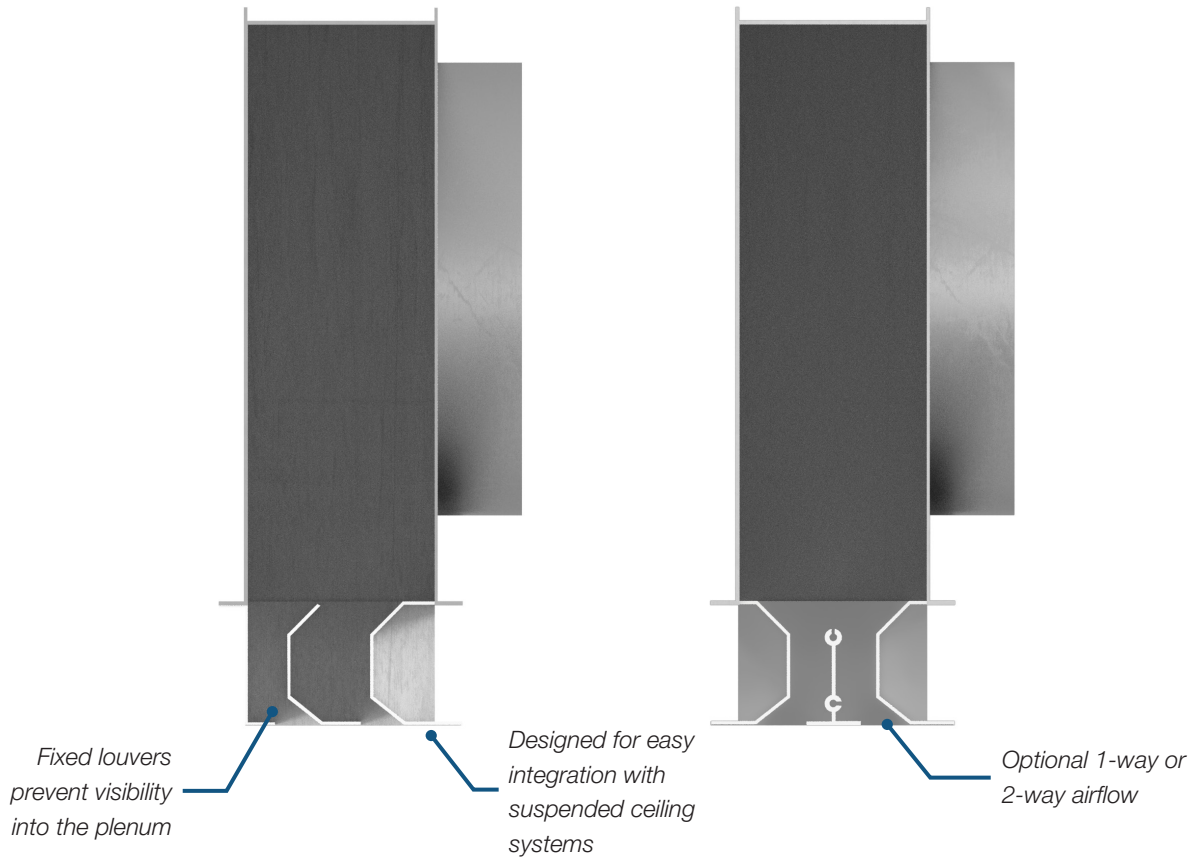
T-BAR DIFFUSER



# TBD7

## T-Bar Diffuser

The TBD7 is a fixed pattern, T-bar mounted linear slot diffuser designed to provide high air capacity with a tight horizontal air pattern. Designed for flexible duct connections, TBD7 diffusers can be easily installed in most T-bar suspension ceiling systems. Matching return diffusers are available to complement supply units and maintain the architectural feel throughout the space.





## ARCHITECTURAL APPEAL

- + The TBD7 features fixed louvers that reduce visibility into the plenum, maintaining the architectural appeal of the ceiling.
- + Matching return diffusers are available to complement supply units and maintain the architectural feel throughout the space.

## CEILING SYSTEM COMPATIBILITY

- + This diffuser can be ordered with a center notch option that bisects the diffuser length so that it can be installed on top of a cross tee.
- + A straddle tee option allows the TBD7 to be installed with one discharge slot on either side of a tee.
- + The TBD7 is also available with factory installed T-bars or T-bar clips on the exterior of the unit for ease of installation.
- + For drywall ceiling applications, a plaster frame is required for mounting.

## INSULATION OPTIONS

- + Internal insulation options include ¼ in. thick fiber free foam or coated fiberglass insulation.
- + External insulation is provided as 1/2 in. foil backed aluminum fiberglass.

## TYPICAL APPLICATIONS

The TBD7 is a fixed-louver t-bar diffuser that is well suited to office space applications as it provides a reliable, tight horizontal airflow pattern and integrates easily with suspended ceiling systems.

### CONSTRUCTION

- + Application
  - Supply (TBD7)
  - Return (TBR7)
- + Number of Slots
  - 1 to 4
- + Airflow
  - 1-Way
  - 2-Way
- + Options
  - Internal insulation
  - External insulation
  - Center notch
  - Straddle mounting

# PERFORMANCE DATA

## 1 Slot, 1 Way

<b>Length = 24 in.</b> <b>Inlet = 6 in.</b>	<b>Total Pressure (in. w.g.)</b>	0.029	0.065	0.116	0.182	0.262	0.356	0.465	0.589	0.727	1.047
	<b>Static Pressure (in. w.g.)</b>	0.027	0.060	0.106	0.166	0.239	0.326	0.425	0.538	0.665	0.957
	<b>Flow Rate (cfm)</b>	39	59	78	98	118	137	157	176	196	235
	<b>Sound (NC)</b>	-	-	19	24	29	33	36	39	42	47
	<b>Throw (ft)</b>	1-3-8	3-6-12	5-8-13	6-10-15	8-12-16	9-13-18	10-13-19	12-14-20	12-15-21	13-16-23
<b>Length = 24 in.</b> <b>Inlet = 8 in.</b>	<b>Total Pressure (in. w.g.)</b>	0.077	0.173	0.308	0.482	0.694	0.944	1.233	1.561	1.927	2.774
	<b>Static Pressure (in. w.g.)</b>	0.075	0.168	0.298	0.466	0.671	0.914	1.193	1.510	1.864	2.685
	<b>Flow Rate (cfm)</b>	70	105	140	175	209	244	279	314	349	419
	<b>Sound (NC)</b>	-	21	29	35	39	43	47	50	52	57
	<b>Throw (ft)</b>	4-7-13	7-10-15	9-13-18	11-14-20	13-15-22	14-17-24	15-18-25	15-19-27	16-20-28	18-22-31
<b>Length = 48 in.</b> <b>Inlet = 6 in.</b>	<b>Total Pressure (in. w.g.)</b>	0.010	0.023	0.041	0.064	0.093	0.126	0.165	0.209	0.258	0.371
	<b>Static Pressure (in. w.g.)</b>	0.008	0.018	0.031	0.049	0.070	0.096	0.125	0.158	0.195	0.281
	<b>Flow Rate (cfm)</b>	39	59	78	98	118	137	157	176	196	235
	<b>Sound (NC)</b>	-	-	-	-	18	22	25	28	31	36
	<b>Throw (ft)</b>	1-1-6	1-3-9	2-6-10	4-7-11	6-9-12	7-9-13	8-10-14	9-11-15	9-11-16	10-12-18
<b>Length = 48 in.</b> <b>Inlet = 8 in.</b>	<b>Total Pressure (in. w.g.)</b>	0.024	0.054	0.097	0.151	0.217	0.296	0.387	0.489	0.604	0.870
	<b>Static Pressure (in. w.g.)</b>	0.022	0.049	0.087	0.135	0.195	0.265	0.347	0.439	0.542	0.780
	<b>Flow Rate (cfm)</b>	70	105	140	175	209	244	279	314	349	419
	<b>Sound (NC)</b>	-	-	17	22	27	31	34	37	40	45
	<b>Throw (ft)</b>	2-4-10	4-8-12	7-10-14	9-11-15	10-12-17	10-13-18	11-14-19	12-14-20	12-15-21	14-17-23
<b>Length = 60 in.</b> <b>Inlet = 6 in.</b>	<b>Total Pressure (in. w.g.)</b>	0.008	0.017	0.031	0.048	0.069	0.094	0.123	0.155	0.192	0.276
	<b>Static Pressure (in. w.g.)</b>	0.005	0.012	0.021	0.032	0.047	0.063	0.083	0.105	0.129	0.186
	<b>Flow Rate (cfm)</b>	39	59	78	98	118	137	157	176	196	235
	<b>Sound (NC)</b>	-	-	-	-	-	19	22	25	28	33
	<b>Throw (ft)</b>	0-1-4	1-2-7	2-4-8	3-7-9	4-7-10	6-8-11	7-8-12	7-9-13	8-9-13	8-10-15
<b>Length = 60 in.</b> <b>Inlet = 8 in.</b>	<b>Total Pressure (in. w.g.)</b>	0.017	0.039	0.069	0.107	0.154	0.210	0.274	0.347	0.428	0.617
	<b>Static Pressure (in. w.g.)</b>	0.015	0.033	0.059	0.091	0.132	0.179	0.234	0.296	0.366	0.527
	<b>Flow Rate (cfm)</b>	70	105	140	175	209	244	279	314	349	419
	<b>Sound (NC)</b>	-	-	-	19	23	27	31	34	36	41
	<b>Throw (ft)</b>	1-3-8	3-7-10	6-8-11	7-9-13	8-10-14	9-11-15	9-11-16	10-12-17	10-13-18	11-14-20

## 2 Slot, 1 Way

<b>Length = 24 in.</b> <b>Inlet = 6 in.</b>	<b>Total Pressure (in. w.g.)</b>	0.023	0.041	0.064	0.093	0.126	0.165	0.209	0.258	0.371	0.505
	<b>Static Pressure (in. w.g.)</b>	0.018	0.031	0.049	0.070	0.096	0.125	0.158	0.195	0.281	0.383
	<b>Flow Rate (cfm)</b>	59	78	98	118	137	157	176	196	235	274
	<b>Sound (NC)</b>	-	-	-	18	22	25	28	31	36	40
	<b>Throw (ft)</b>	1-3-9	2-6-12	4-7-15	6-9-16	7-10-18	8-12-19	9-13-20	10-15-21	12-16-23	14-18-25
<b>Length = 24 in.</b> <b>Inlet = 8 in.</b>	<b>Total Pressure (in. w.g.)</b>	0.054	0.097	0.151	0.217	0.296	0.387	0.489	0.604	0.870	1.184
	<b>Static Pressure (in. w.g.)</b>	0.049	0.087	0.135	0.195	0.265	0.347	0.439	0.542	0.780	1.062
	<b>Flow Rate (cfm)</b>	105	140	175	209	244	279	314	349	419	489
	<b>Sound (NC)</b>	-	17	22	27	31	34	37	40	45	49
	<b>Throw (ft)</b>	4-8-15	7-11-18	9-13-20	11-15-22	12-17-24	14-18-25	15-19-27	16-20-28	18-22-31	19-24-33
<b>Length = 48 in.</b> <b>Inlet = 8 in.</b>	<b>Total Pressure (in. w.g.)</b>	0.020	0.035	0.055	0.079	0.108	0.141	0.178	0.220	0.317	0.432
	<b>Static Pressure (in. w.g.)</b>	0.014	0.025	0.040	0.057	0.077	0.101	0.128	0.158	0.228	0.310
	<b>Flow Rate (cfm)</b>	105	140	175	209	244	279	314	349	419	489
	<b>Sound (NC)</b>	-	-	16	20	24	27	30	34	38	
	<b>Throw (ft)</b>	2-4-12	3-7-14	5-10-15	7-12-17	9-13-18	11-14-19	12-14-20	12-15-21	14-17-23	15-18-25
<b>Length = 48 in.</b> <b>Inlet = 10 in.</b>	<b>Total Pressure (in. w.g.)</b>	0.023	0.041	0.064	0.093	0.126	0.165	0.209	0.258	0.371	0.505
	<b>Static Pressure (in. w.g.)</b>	0.018	0.031	0.049	0.070	0.096	0.125	0.158	0.195	0.281	0.383
	<b>Flow Rate (cfm)</b>	118	157	196	235	274	314	353	392	470	549
	<b>Sound (NC)</b>	-	-	-	18	22	25	28	31	36	40
	<b>Throw (ft)</b>	2-5-12	4-9-14	6-11-16	9-12-18	10-13-19	12-14-20	12-15-21	13-16-23	14-18-25	15-19-27
<b>Length = 60 in.</b> <b>Inlet = 8 in.</b>	<b>Total Pressure (in. w.g.)</b>	0.015	0.027	0.041	0.060	0.081	0.106	0.134	0.166	0.239	0.325
	<b>Static Pressure (in. w.g.)</b>	0.009	0.017	0.026	0.037	0.051	0.066	0.084	0.104	0.149	0.203
	<b>Flow Rate (cfm)</b>	105	140	175	209	244	279	314	349	419	489
	<b>Sound (NC)</b>	-	-	-	-	17	21	24	27	31	35
	<b>Throw (ft)</b>	1-3-10	2-5-11	4-8-13	5-10-14	7-11-15	9-11-16	10-12-17	10-13-18	11-14-20	12-15-21
<b>Length = 60 in.</b> <b>Inlet = 10 in.</b>	<b>Total Pressure (in. w.g.)</b>	0.017	0.031	0.048	0.069	0.094	0.123	0.155	0.192	0.276	0.376
	<b>Static Pressure (in. w.g.)</b>	0.012	0.021	0.032	0.047	0.063	0.083	0.105	0.129	0.186	0.254
	<b>Flow Rate (cfm)</b>	118	157	196	235	274	314	353	392	470	549
	<b>Sound (NC)</b>	-	-	-	-	19	22	25	28	33	37
	<b>Throw (ft)</b>	2-4-10	3-7-12	5-9-13	7-10-15	9-11-16	10-12-17	10-13-18	11-13-19	12-15-21	13-16-22

For performance notes, see end of section.

# PERFORMANCE DATA

## 3 Slot, 1 Way

<b>Length = 24 in.</b> <b>Inlet = 8 in.</b>	<b>Total Pressure (in. w.g.)</b>	0.029	0.052	0.082	0.118	0.161	0.210	0.265	0.328	0.472	0.642
	<b>Static Pressure (in. w.g.)</b>	0.024	0.042	0.066	0.096	0.130	0.170	0.215	0.265	0.382	0.520
	<b>Flow Rate (cfm)</b>	105	140	175	209	244	279	314	349	419	489
	<b>Sound (NC)</b>	-	-	16	21	25	28	31	34	38	42
	<b>Throw (ft)</b>	3-6-13	5-9-18	7-11-20	9-13-22	10-16-24	12-18-25	13-19-27	15-20-28	18-22-31	19-24-33
<b>Length = 24 in.</b> <b>Inlet = 10 in.</b>	<b>Total Pressure (in. w.g.)</b>	0.035	0.062	0.097	0.140	0.190	0.248	0.314	0.388	0.559	0.761
	<b>Static Pressure (in. w.g.)</b>	0.029	0.052	0.081	0.117	0.160	0.208	0.264	0.326	0.469	0.639
	<b>Flow Rate (cfm)</b>	118	157	196	235	274	314	353	392	470	549
	<b>Sound (NC)</b>	-	-	18	22	26	30	33	35	40	44
	<b>Throw (ft)</b>	3-7-15	6-10-19	8-13-21	10-15-23	12-18-25	13-19-27	15-20-28	17-21-30	19-23-33	20-25-35
<b>Length = 48 in.</b> <b>Inlet = 8 in.</b>	<b>Total Pressure (in. w.g.)</b>	0.012	0.021	0.033	0.048	0.065	0.086	0.108	0.134	0.192	0.262
	<b>Static Pressure (in. w.g.)</b>	0.006	0.011	0.018	0.026	0.035	0.046	0.058	0.071	0.103	0.140
	<b>Flow Rate (cfm)</b>	105	140	175	209	244	279	314	349	419	489
	<b>Sound (NC)</b>	-	-	-	-	15	19	22	24	29	33
	<b>Throw (ft)</b>	1-2-9	2-4-13	3-6-15	4-9-17	6-11-18	7-13-19	9-14-20	11-15-21	13-17-23	15-18-25
<b>Length = 48 in.</b> <b>Inlet = 10 in.</b>	<b>Total Pressure (in. w.g.)</b>	0.014	0.024	0.038	0.055	0.075	0.098	0.124	0.153	0.220	0.300
	<b>Static Pressure (in. w.g.)</b>	0.008	0.015	0.023	0.033	0.044	0.058	0.074	0.091	0.131	0.178
	<b>Flow Rate (cfm)</b>	118	157	196	235	274	314	353	392	470	549
	<b>Sound (NC)</b>	-	-	-	-	17	20	23	26	30	34
	<b>Throw (ft)</b>	1-3-11	2-5-14	4-8-16	5-11-18	7-13-19	9-14-20	11-15-21	12-16-23	14-18-25	15-19-27
<b>Length = 60 in.</b> <b>Inlet = 10 in.</b>	<b>Total Pressure (in. w.g.)</b>	0.011	0.019	0.030	0.043	0.058	0.076	0.096	0.119	0.171	0.232
	<b>Static Pressure (in. w.g.)</b>	0.005	0.009	0.014	0.020	0.028	0.036	0.046	0.056	0.081	0.110
	<b>Flow Rate (cfm)</b>	118	157	196	235	274	314	353	392	470	549
	<b>Sound (NC)</b>	-	-	-	-	-	17	20	23	28	32
	<b>Throw (ft)</b>	1-2-9	2-4-12	3-6-13	4-9-15	5-11-16	7-12-17	9-13-18	11-13-19	12-15-21	13-16-22
<b>Length = 60 in.</b> <b>Inlet = 12 in.</b>	<b>Total Pressure (in. w.g.)</b>	0.014	0.024	0.038	0.055	0.075	0.098	0.124	0.153	0.220	0.300
	<b>Static Pressure</b>	0.008	0.015	0.023	0.033	0.044	0.058	0.074	0.091	0.131	0.178
	<b>Flow Rate (cfm)</b>	147	196	245	294	343	392	441	490	588	686
	<b>Sound (NC)</b>	-	-	-	-	17	20	23	26	30	34
	<b>Throw (ft)</b>	1-3-12	3-6-13	4-9-15	6-12-16	8-13-18	11-13-19	12-14-20	12-15-21	13-16-23	15-18-25

## 4 Slot, 1 Way

<b>Length = 24 in.</b> <b>Inlet = 8 in.</b>	<b>Total Pressure (in. w.g.)</b>	0.020	0.035	0.055	0.079	0.108	0.141	0.179	0.220	0.317	0.432
	<b>Static Pressure (in. w.g.)</b>	0.014	0.025	0.040	0.057	0.077	0.101	0.128	0.158	0.228	0.310
	<b>Flow Rate (cfm)</b>	105	140	175	209	244	279	314	349	419	489
	<b>Sound (NC)</b>	-	-	-	16	20	24	27	30	34	38
	<b>Throw (ft)</b>	2-4-12	3-7-16	5-10-20	7-12-22	9-14-24	11-16-25	12-18-27	13-20-28	16-22-31	18-24-33
<b>Length = 24 in.</b> <b>Inlet = 10 in.</b>	<b>Total Pressure (in. w.g.)</b>	0.023	0.041	0.064	0.093	0.126	0.165	0.209	0.258	0.371	0.505
	<b>Static Pressure (in. w.g.)</b>	0.018	0.031	0.049	0.070	0.096	0.125	0.158	0.195	0.281	0.383
	<b>Flow Rate (cfm)</b>	118	157	196	235	274	314	353	392	470	549
	<b>Sound (NC)</b>	-	-	-	18	22	25	28	31	36	40
	<b>Throw (ft)</b>	2-5-13	4-9-18	6-11-21	9-13-23	10-16-25	12-18-27	13-20-28	15-21-30	18-23-33	20-25-35
<b>Length = 48 in.</b> <b>Inlet = 10 in.</b>	<b>Total Pressure (in. w.g.)</b>	0.010	0.018	0.028	0.040	0.054	0.071	0.090	0.111	0.159	0.217
	<b>Static Pressure (in. w.g.)</b>	0.004	0.008	0.012	0.017	0.024	0.031	0.039	0.048	0.069	0.095
	<b>Flow Rate (cfm)</b>	118	157	196	235	274	314	353	392	470	549
	<b>Sound (NC)</b>	-	-	-	-	17	20	22	27	31	
	<b>Throw (ft)</b>	1-2-8	2-3-13	2-5-16	3-8-18	5-11-19	6-13-20	8-15-21	10-16-23	13-18-25	15-19-27
<b>Length = 48 in.</b> <b>Inlet = 12 in.</b>	<b>Total Pressure (in. w.g.)</b>	0.013	0.023	0.035	0.051	0.070	0.091	0.115	0.142	0.204	0.278
	<b>Static Pressure (in. w.g.)</b>	0.007	0.013	0.020	0.029	0.039	0.051	0.064	0.080	0.114	0.156
	<b>Flow Rate (cfm)</b>	147	196	245	294	343	392	441	490	588	686
	<b>Sound (NC)</b>	-	-	-	-	16	19	22	25	30	33
	<b>Throw (ft)</b>	1-3-12	2-5-16	4-8-18	5-12-20	7-14-21	10-16-23	12-17-24	13-18-25	16-20-28	17-21-30
<b>Length = 60 in.</b> <b>Inlet = 10 in.</b>	<b>Total Pressure (in. w.g.)</b>	0.008	0.014	0.022	0.032	0.043	0.056	0.071	0.088	0.127	0.173
	<b>Static Pressure (in. w.g.)</b>	0.002	0.004	0.006	0.009	0.013	0.017	0.021	0.026	0.037	0.051
	<b>Flow Rate (cfm)</b>	118	157	196	235	274	314	353	392	470	549
	<b>Sound (NC)</b>	-	-	-	-	-	-	17	20	25	29
	<b>Throw (ft)</b>	1-1-6	1-3-10	2-4-13	3-6-15	3-8-16	4-10-17	6-13-18	7-13-19	10-15-21	13-16-22
<b>Length = 60 in.</b> <b>Inlet = 12 in.</b>	<b>Total Pressure (in. w.g.)</b>	0.010	0.018	0.028	0.040	0.054	0.071	0.090	0.111	0.159	0.217
	<b>Static Pressure</b>	0.004	0.008	0.012	0.017	0.024	0.031	0.039	0.048	0.069	0.095
	<b>Flow Rate (cfm)</b>	147	196	245	294	343	392	441	490	588	686
	<b>Sound (NC)</b>	-	-	-	-	-	17	20	22	27	31
	<b>Throw (ft)</b>	1-2-9	2-4-13	3-6-15	4-9-16	5-12-18	7-13-19	9-14-20	11-15-21	13-16-23	15-18-25

For performance notes, see end of section.

# PERFORMANCE DATA

## 2 Slot, 2 Way

Length = 24 in. Inlet = 6 in.	Total Pressure (in. w.g.)	0.023	0.041	0.064	0.093	0.126	0.165	0.209	0.258	0.371	0.505
	Static Pressure (in. w.g.)	0.018	0.031	0.049	0.070	0.096	0.125	0.158	0.195	0.281	0.383
	Flow Rate (cfm)	59	78	98	118	137	157	176	196	235	274
	Sound (NC)	-	-	-	18	22	25	28	31	36	40
	Throw (ft)	1-2-5	1-3-6	2-4-8	3-5-10	4-6-11	4-6-13	5-7-14	5-8-16	6-10-19	8-11-23
Length = 24 in. Inlet = 8 in.	Total Pressure (in. w.g.)	0.054	0.097	0.151	0.217	0.296	0.387	0.489	0.604	0.870	1.184
	Static Pressure (in. w.g.)	0.049	0.087	0.135	0.195	0.265	0.347	0.439	0.542	0.780	1.062
	Flow Rate (cfm)	105	140	175	209	244	279	314	349	419	489
	Sound (NC)	-	17	22	27	31	34	37	40	45	49
	Throw (ft)	2-4-9	4-6-11	5-7-14	6-9-17	7-10-20	8-11-23	9-13-25	10-14-27	11-17-29	13-20-32
Length = 48 in. Inlet = 8 in.	Total Pressure (in. w.g.)	0.020	0.035	0.055	0.079	0.108	0.141	0.178	0.220	0.317	0.432
	Static Pressure (in. w.g.)	0.014	0.025	0.040	0.057	0.077	0.101	0.128	0.158	0.228	0.310
	Flow Rate (cfm)	105	140	175	209	244	279	314	349	419	489
	Sound (NC)	-	-	-	16	20	24	27	30	34	38
	Throw (ft)	1-2-7	2-4-9	3-5-11	4-7-13	5-8-15	6-9-17	7-10-18	7-11-19	9-13-21	10-15-22
Length = 48 in. Inlet = 10 in.	Total Pressure (in. w.g.)	0.023	0.041	0.064	0.093	0.126	0.165	0.209	0.258	0.371	0.505
	Static Pressure (in. w.g.)	0.018	0.031	0.049	0.070	0.096	0.125	0.158	0.195	0.281	0.383
	Flow Rate (cfm)	118	157	196	235	274	314	353	392	470	549
	Sound (NC)	-	-	-	18	22	25	28	31	36	40
	Throw (ft)	1-3-7	2-5-10	4-6-12	5-7-15	6-9-17	6-10-18	7-11-19	8-12-20	10-15-22	11-17-24
Length = 60 in. Inlet = 8 in.	Total Pressure (in. w.g.)	0.015	0.027	0.041	0.060	0.081	0.106	0.134	0.166	0.239	0.325
	Static Pressure (in. w.g.)	0.009	0.017	0.026	0.037	0.051	0.066	0.084	0.104	0.149	0.203
	Flow Rate (cfm)	105	140	175	209	244	279	314	349	419	489
	Sound (NC)	-	-	-	-	17	21	24	27	31	35
	Throw (ft)	1-2-6	1-3-8	2-5-10	3-6-12	4-7-13	5-8-13	6-9-14	7-10-15	8-12-16	9-13-18
Length = 60 in. Inlet = 10 in.	Total Pressure (in. w.g.)	0.017	0.031	0.048	0.069	0.094	0.123	0.155	0.192	0.276	0.376
	Static Pressure	0.012	0.021	0.032	0.047	0.063	0.083	0.105	0.129	0.186	0.254
	Flow Rate (cfm)	118	157	196	235	274	314	353	392	470	549
	Sound (NC)	-	-	-	-	19	22	25	28	33	37
	Throw (ft)	1-2-7	2-4-9	3-6-11	4-7-12	5-8-13	6-9-14	7-10-15	7-11-16	9-12-17	10-13-19

## 4 Slot, 2 Way

Length = 24 in. Inlet = 8 in.	Total Pressure (in. w.g.)	0.020	0.035	0.055	0.079	0.108	0.141	0.178	0.220	0.317	0.432
	Static Pressure (in. w.g.)	0.014	0.025	0.040	0.057	0.077	0.101	0.128	0.158	0.228	0.310
	Flow Rate (cfm)	105	140	175	209	244	279	314	349	419	489
	Sound (NC)	-	-	-	16	20	24	27	30	34	38
	Throw (ft)	1-2-7	2-4-9	3-5-11	4-7-13	5-8-15	6-9-17	7-10-20	7-11-22	9-13-26	10-15-30
Length = 24 in. Inlet = 10 in.	Total Pressure (in. w.g.)	0.023	0.041	0.064	0.093	0.126	0.165	0.209	0.258	0.371	0.505
	Static Pressure (in. w.g.)	0.018	0.031	0.049	0.070	0.096	0.125	0.158	0.195	0.281	0.383
	Flow Rate (cfm)	118	157	196	235	274	314	353	392	470	549
	Sound (NC)	-	-	-	18	22	25	28	31	36	40
	Throw (ft)	1-3-7	2-5-10	4-6-12	5-7-15	6-9-17	6-10-19	7-11-22	8-12-24	10-15-29	11-17-34
Length = 48 in. Inlet = 10 in.	Total Pressure (in. w.g.)	0.010	0.018	0.028	0.040	0.054	0.071	0.090	0.111	0.159	0.217
	Static Pressure (in. w.g.)	0.004	0.008	0.012	0.017	0.024	0.031	0.039	0.048	0.069	0.095
	Flow Rate (cfm)	118	157	196	235	274	314	353	392	470	549
	Sound (NC)	-	-	-	-	-	17	20	22	27	31
	Throw (ft)	1-1-5	1-2-7	1-3-9	2-5-11	3-6-13	4-7-14	5-8-16	6-9-18	7-11-21	8-13-24
Length = 48 in. Inlet = 12 in.	Total Pressure (in. w.g.)	0.013	0.023	0.035	0.051	0.070	0.091	0.115	0.142	0.204	0.278
	Static Pressure (in. w.g.)	0.007	0.013	0.020	0.029	0.039	0.051	0.064	0.080	0.114	0.156
	Flow Rate (cfm)	147	196	245	294	343	392	441	490	588	686
	Sound (NC)	-	-	-	-	16	19	22	25	30	33
	Throw (ft)	1-2-7	1-3-9	2-5-11	3-7-13	4-8-16	6-9-18	7-10-20	7-11-22	9-13-25	10-16-27
Length = 60 in. Inlet = 10 in.	Total Pressure (in. w.g.)	0.008	0.014	0.022	0.032	0.043	0.056	0.071	0.088	0.127	0.173
	Static Pressure (in. w.g.)	0.002	0.004	0.006	0.009	0.013	0.017	0.021	0.026	0.037	0.051
	Flow Rate (cfm)	118	157	196	235	274	314	353	392	470	549
	Sound (NC)	-	-	-	-	-	-	17	20	25	29
	Throw (ft)	0-1-3	1-1-6	1-2-8	1-3-10	2-4-11	3-6-13	3-7-15	4-8-16	6-10-17	8-11-19
Length = 60 in. Inlet = 12 in.	Total Pressure (in. w.g.)	0.010	0.018	0.028	0.040	0.054	0.071	0.090	0.111	0.159	0.217
	Static Pressure	0.004	0.008	0.012	0.017	0.024	0.031	0.039	0.048	0.069	0.095
	Flow Rate (cfm)	147	196	245	294	343	392	441	490	588	686
	Sound (NC)	-	-	-	-	-	17	20	22	27	31
	Throw (ft)	1-1-5	1-2-8	2-4-10	2-5-12	3-7-14	4-8-16	5-9-17	6-10-18	8-12-19	9-14-21

**Performance Notes:**

1. Tested in accordance with ASHRAE Standard 70-2006 "Method of Testing for Rating the Performance of Air Outlets and Inlets."
2. Air flow is in cfm.
3. All pressures are in in. w.g.
4. Throw values are measured in feet for terminal velocities of 150 fpm (minimum), 100 fpm (middle) and 50 fpm (maximum).
5. Throw data is based on supply air and room air being at isothermal conditions.
6. NC values are based on room absorption of 10 dB re 10<sup>-12</sup> watts and one diffuser.
7. Blanks indicate NC less than 15.





Product Improvement is a continuing endeavour at Price. Therefore, specifications are subject to change without notice. Consult your Price Sales Representative for current specifications or more detailed information. Not all products may be available in all geographic areas. All goods described in this document are warranted as described in the Limited Warranty shown at [priceindustries.com](http://priceindustries.com). The complete Price product catalog can be viewed online at [priceindustries.com](http://priceindustries.com).